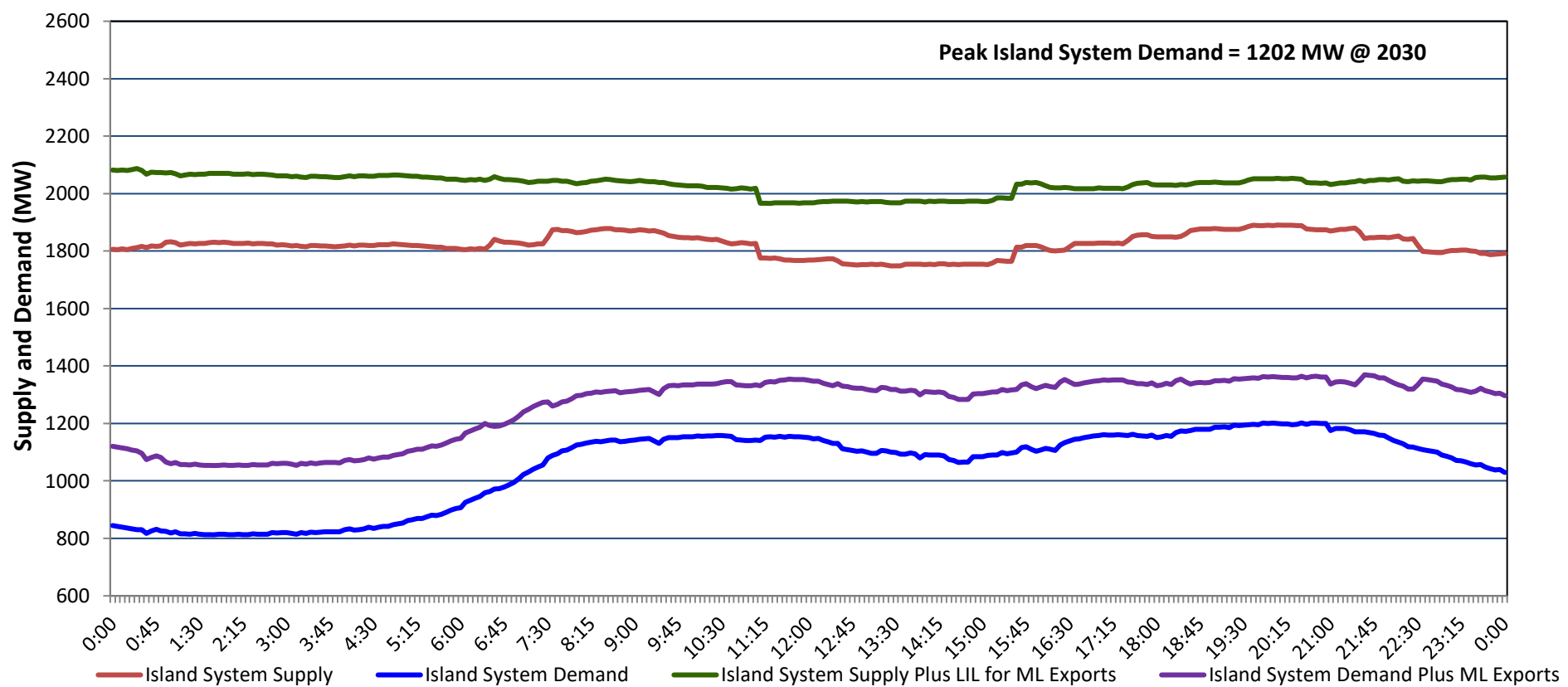


# Newfoundland Labrador Hydro (NLH) Supply and Demand Status Report Filed Thursday, March 20, 2025

## Section 1 Island Interconnected System - Supply, Demand & Exports Actual 24 Hour System Performance For Wednesday, March 19, 2025



### Island Supply Notes For March 19, 2025

- A** As of 0952 hours, March 11, 2025, Granite Canal Unit available at 32 MW due to forced derating (40 MW).  
**B** As of 0915 hours, March 16, 2025, Bay d'Espoir Unit 6 unavailable due to planned outage (76.5 MW).  
**C** As of 0635 hours, March 18, 2025, Holyrood Unit 3 unavailable due to planned outage 130 MW (150 MW).  
**D** At 1107 hours, March 19, 2025, Hardwoods Gas Turbine unavailable due to planned outage (50 MW).  
**E** At 1530 hours, March 19, 2025, Hardwoods Gas Turbine available (50 MW).

## Section 2 Island Interconnected System - Supply, Demand & Outlook

Thu, Mar 20, 2025	Island System Outlook <sup>2</sup>	Seven-Day Forecast	Island System Daily Peak Demand (MW)	
			Forecast <sup>8</sup>	Adjusted <sup>6</sup>
Island System Supply: <sup>4</sup>	1,939 MW	Thursday, March 20, 2025	1,285	1,180
NLH Island Generation: <sup>3,7</sup>	1,460 MW	Friday, March 21, 2025	1,135	1,032
NLH Island Power Purchases: <sup>5</sup>	125 MW	Saturday, March 22, 2025	1,005	903
NP and CBPP Owned Generation:	220 MW	Sunday, March 23, 2025	1,125	1,022
LIL/ML Net Imports to Island: <sup>9</sup>	134 MW	Monday, March 24, 2025	1,260	1,155
		Tuesday, March 25, 2025	1,340	1,235
7-Day Island Peak Demand Forecast:	1,340 MW	Wednesday, March 26, 2025	1,205	1,101

### Island Supply Notes For March 20, 2025

- Notes:
1. Generation outages for running and corrective maintenance are included. These are not unusual for power system operations. They generally do not impact customer supply. Hydro schedules outages to system equipment whenever possible to coincide with periods when customer demands are low and sufficient supply reserves are available. However, from time to time equipment outages are necessary and reserves may be impacted.
  2. As of 0800 Hours.
  3. Gross continuous unit output.
  4. Gross output from all Island sources (including Note 3).
  5. NLH Island Power Purchases include: ML Imports, Exploits Generation, Rattle Brook, Star Lake, Wind Generation and capacity assistance (when applicable).
  6. Adjusted for interruptible load and the impact of voltage reduction when applicable.
  7. Due to limitations inherent in the design of combustion turbines, the output of combustion turbines may be reduced in the event that ambient temperatures exceed the threshold required for full rated output. This threshold is dependent on the design of each turbine.
  8. Does not include ML Exports.
  9. LIL Import sunk in the Island System. Actual LIL flows will be restricted by various system conditions including, but not limited to, Island Load, ML Exports and Avalon Unit status.

## Section 3 Island Peak Demand and Exports Information Previous Day Actual Peak and Current Day Forecast Peak

Wed, Mar 19, 2025	Island Peak Demand <sup>10</sup>	20:30	1,202 MW
	Exports at Peak		162 MW
	LIL Net Imports to Island		1,188 MWh
Thu, Mar 20, 2025	Forecast Island Peak Demand		1,285 MW

- Notes: 10. Island Demand is supplied by NLH generation and purchases, LIL Imports plus generation owned and operated by Newfoundland Power and Corner Brook Pulp & Paper (Deer Lake Power, DLP).